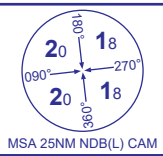


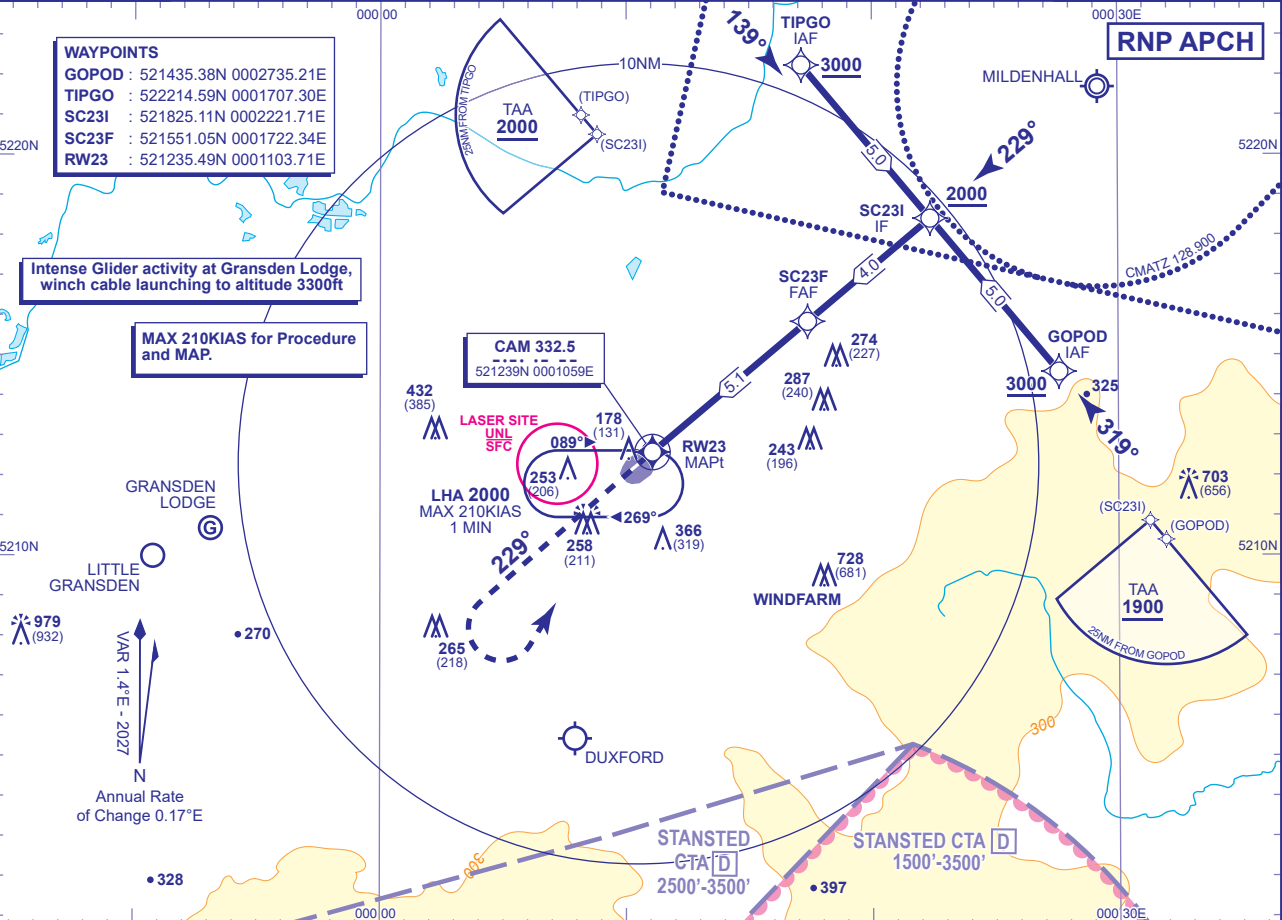
INSTRUMENT APPROACH CHART - ICAO

RNP
RWY 23
(ACFT CAT A,B,C,D)



APP	120.965	CAMBRIDGE APPROACH	AD ELEVATION	47
TWR	125.905	CAMBRIDGE TOWER	THR ELEVATION	47
ATIS	134.605	CAMBRIDGE INFORMATION	OBSTACLE ELEVATION	979 AMSL (932) (ABOVE THR)
			BEARINGS ARE MAGNETIC	

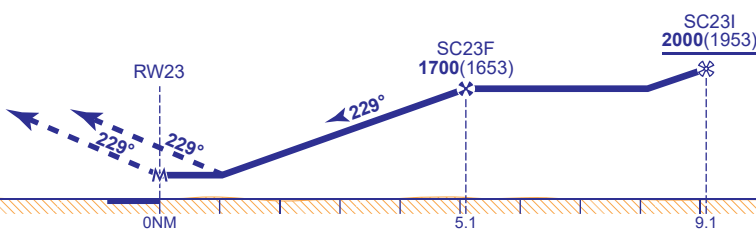
MIN TEMP -15°C
TRANSITION ALTITUDE 6000



RECOMMENDED PROFILE Gradient 5.2%, 318FT/NM					
NM to RW23	5	4	3	2	1
ALT(HGT)	1680(1633)	1360(1313)	1040(993)	720(673)	400(353)

TCH 40

MAPt (LNAV): RW23
Climb straight ahead to 2000,
then turn left to NDB(L) CAM
to hold at 2000, or as directed.



Aircraft Category		A	B	C	D	Rate of descent	G/S KT	160	140	120	100	80
OCA (OCH)	LNAV/VNAV	460(413)	460(413)	460(413)	460(413)		FT/MIN	850	740	640	530	420
	LNAV	460(413)	460(413)	460(413)	460(413)							
VM(C)OCA (OCH AAL)		Total Area	660(613)	710(663)	810(763)	1050(1003)						

NOTE 1 Aircraft will normally be required to hold not lower than 3000.
2 RNP Procedure is subject to approval from Cambridge ATC.
3 Missed Approach Procedure uses conventional navigation aids and is not available without NDB(L) CAM.
4 Intense glider activity and winch launching can be expected at Gransden Lodge Glider Site seven days a week during daylight hours. Pilots should avoid overflying the site on approach to Cambridge.

CHANGE (1/26): MAG VAR AND MAG TRACKS UPDATED.